

What's the use of EasyExport?

EasyExport supports the user of [KARL DEUTSCH measuring instruments](#) with transfer of readings to Windows-based PC programs.

Instead of entering the readings **manually** into, for instance, word processors or spread sheets, the data coming from the [interface](#) of the PC are entered into the programs **automatically** according to respective settings of **EasyExport**.

Thus individual measuring reports or statistics evaluations can be created fast and easily with the help of a program of your choice.

Minimum system requirements

- Operating systems: Windows XP / 2000 / Vista / 7 / 8 / 8.1 / 10
- CPU and RAM: suitable for operating system
- Free HD memory: 5 MByte
- You will need a corresponding interface cable to connect the PC to the [KARL DEUTSCH instrument](#).

Installation

The program can be [installed](#) on the HDD of a PC, however it is possible as well to run it without [installation](#) directly from the CD.

Program start

Start **EasyExport** by double-clicking the program [icon](#).

Depending on the settings a [setup window](#) will open or **EasyExport** is displayed minimized in the [system tray](#) of the task bar.

Note: As long as free interface ports are available **EasyExport** can be started repeatedly. Each instance then will use a different free interface.

Operating

When starting the program for the first time you need to select the properties of **EasyExport** in the [setup window](#). Then click the button "Continue" or select the menu topic "Program->Continue". Subsequently **EasyExport** will be displayed minimized in the [system tray](#).

- Open the program to where the readings shall be transferred.
- Click the cursor to the place within the open document where the first reading shall be entered.
- Start measurement with the instrument. The first reading will be entered at the selected place.

The insert positions of all subsequent readings is determined by the selections in the [setup window](#).

Note: Readings always will be written into currently active windows. Thus, please ensure that the windows into which you want to transfer the measured values, is activated (if required, mouse-click into this window). An active window can be identified by the upper window frame being coloured (colour selection via the system control of your operating system).

The format of the numbers can be selected in the [setup window](#). If you want to alter the [selections](#) you need to open the respective window by means of a double-click on the program icon in the [system tray](#).

Quit

Quit **EasyExport** by clicking the button "Exit" in the [setup window](#) or right-click on the symbol in the [system tray](#) and select the menu topic "Leave Program".

Contact

[KARL DEUTSCH Pruef- und Messgeraetebau GmbH + Co KG](#)

Supported Instruments

The following [KARL DEUTSCH](#) instrument families are supported:

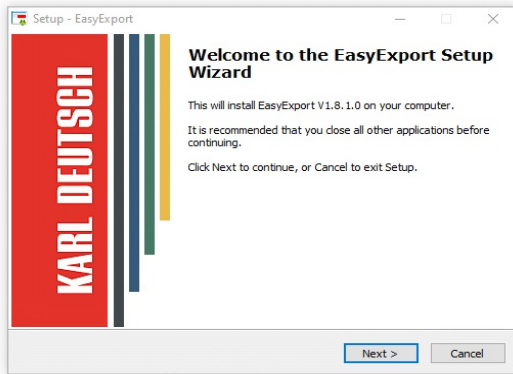
- Pocket-LEPTOSKOP 2018
- Pocket-LEPTOSKOP 2021
- Pocket-LEPTOSKOP 2026
- LEPTOSKOP 2041
- LEPTOSKOP 2042
- DEUTROMETER 3872
- DEUTROMETER 3873
- RMG 4015
- ECHOMETER 1074
- ECHOMETER 1075
- ECHOMETER 1076
- ECHOMETER 1077

Other instruments on request.

Installation

Note: If you want to start the program without prior installation, change to the directory \EasyExport on the install CD and start the file "EasyExport.exe". Installation on the hard disc drive is not required.

For operation without CD you should install **EasyExport** on the HD of the PC by starting "Setup.exe" on the CD. Then follow the instructions of the install program.



Slow Programs

With slow programs the data transfer usually is faster than the quality of the programs to acquire and process data.

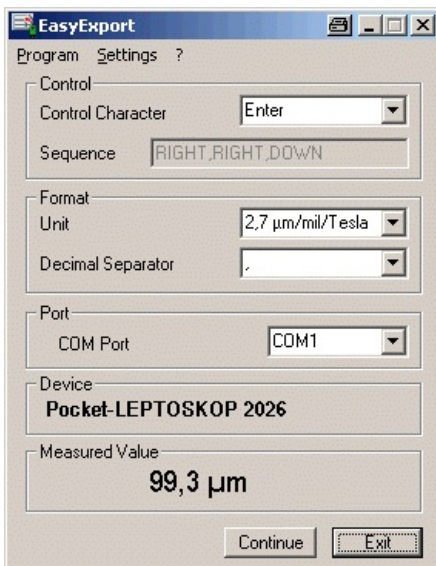
Therefore **EasyExport** comes with a data buffer for 3000 readings so no data will get lost. Merely writing of the document might be slower than expected by the user.

Program Icon

Open *EasyExport* by double-clicking the icon:



The Set-Up Window



This window is used to select the set-up for the data transfer.

Note: The set-up selected here will be stored to the [configuration file](#) "EasyExport.ini" when closing the program. You can use a word editor to edit it there.

Note: If the program is minimized to the [System Tray](#), you need to double-click the symbol there in order to open the setup window or right-click the program icon and select the item "Settings".

Control

Here you can select the [control character](#) for control of the cursor in the receiving program.

If a single control character is not sufficient select the topic **Sequence**. This will enable the input field of same name where you may enter [sequence of control characters](#).

Format

This is used to select the [measuring unit](#) which will be appended after transfer of the measured value. Additionally a field is provided where you can select the [decimal separator](#) to be used.

Port

Here you can select the [interface](#) which is used in the PC to communicate with the instrument.

Note: EasyExport can be started repeatedly and then becomes active with more than one instance. Each time it will use another free interface.

Device

With instruments supporting automatic identification (e.g. Pocket-LEPTOSKOP 2018/2021/2026, LEPTOSKOP 2042, ECHOMETER 1075) the instrument designation shows here.

Measured Value

Here you can see the measured value as it is transferred from the instrument.

Sequences and terminating characters

The following keys can be used as [terminating characters](#) in the [set-up window](#) and in the [configuration file](#):

TAB	Tab key
CTAB	Ctrl and Tab key simultaneously
LEFT	Cursor Left key
RIGHT	Cursor Right key
UP	Cursor Up key
DOWN	Cursor Down key
ENTER	Enter key

Sequences

With "sequences" you can use a sequence of the above mentioned key designations. Separate the individual keys by commas. Spaces are not permitted. A maximum of 299 characters may be entered. Writing is case-insensitive.

Example of a sequence: TAB,ENTER,DOWN

Terminating Characters

The program will append [terminating characters](#) (simulating key clicks) to the transferred readings (if selected, incl. [unit of measurement](#)) in order to control the input cursor of the receiving program.

Select from: None, Enter, Tab, Right, Left, Up, Down.

Decimal Separator

The decimal separator can be selected from "," (comma) and "." (period).

Interface

As an interface all unused serial interfaces (COM ports) of the instrument may be used.

System Tray

In the **system tray**, i.e. a distinguished area of the task bar of the operating system, a [program icon](#) is displayed if **EasyExport** is active and the [set-up window](#) is minimised.

Note: The **system tray** is used, for instance, to show the time of the PC.



There are the following meanings for the various [program icons](#):

- A:** Instrument automatically detected. No data transfer.
- B:** Instrument automatically detected. Data transfer is active.
- C:** Instrument is not automatically detected. Data will be transferred as soon as an instrument is connected.
- D:** Instrument w/o automatic instrument detection. No data transfer.
- E:** Instrument w/o automatic instrument detection. Data transfer is active.

Note:

- A-C** automatic detection is possible with the instruments Pocket-LEPTOSKOP 2018/2021/2026, LEPTOSKOP 2042, DEUTROMETER 3873 and ECHOMETER 1075/1076/1077
- D-E** applicable for the instruments LEPTOSKOP 2041, DEUTROMETER 3872, RMG 4015, ECHOMETER 1074

Contacting KARL DEUTSCH

KARL DEUTSCH
Pruef- und Messgeraetebau
GmbH + Co KG

Otto-Hausmann-Ring 101
42115 Wuppertal
Germany

Tel.: ++49 (-202) 7192-0
Fax: ++49 (-202) 714932

www.karldeutsch.de
info@karldeutsch.de